

Edmond

FICHE COMMANDE

PURCHASE ORDER



NOM DU MAGASIN

NAME OF THE SHOP

CONTRE-MARQUE

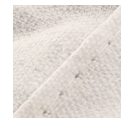
COUNTER MARK

SOFAREV

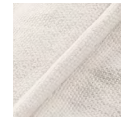
LE CONFORT AUTREMENT

Tissu

- TISSU STRUCTURE / STRUCTURE FABRIC
- TISSU DOSSIER / BACK FABRIC
- + PASSE POIL / PIPING SEAM FABRIC
- TISSU ASSISE / SEATED FABRIC
- + PASSE POIL / PIPING SEAM FABRIC

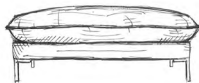


COUTURE PLATE
FLAT SEAM



COUTURE
PASSE - POIL
PIPING SEAM

Elements



Pouf

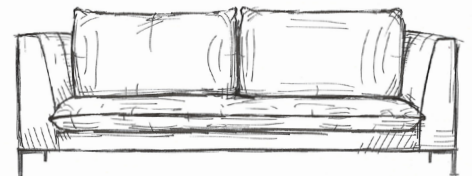
60 x 60 x

80 x 80 x



Fauteuil / Armchair

1 pl : 100 x

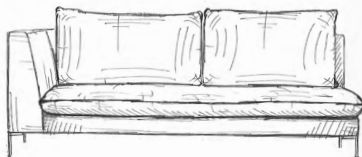


Canapé / Sofa

2 pl : 180 x

3 pl : 200 x

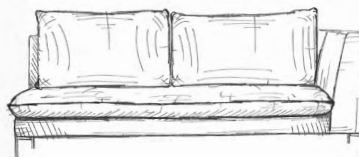
4 pl : 220 x



Manchot (droit ou gauche / left or right)

2 pl : 160 x

3 pl : 180 x



Mériidienne simple / Meridian

100 x 155 x

Edmond



2

S O F A R E V

LE CONFORT AUTREMENT

Pieds 17 cm / Feet 17 cm

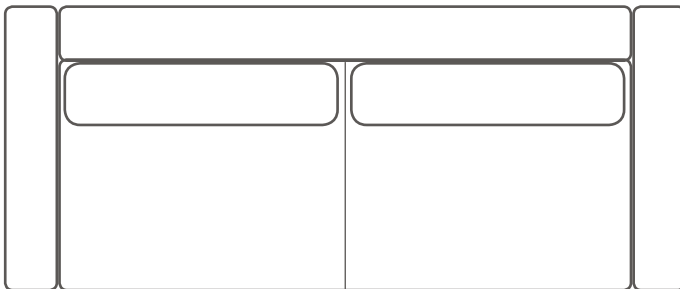
Métal inox (inclus)
Stainless steel metal (included)

Noir mat (option)
Matt black (option)

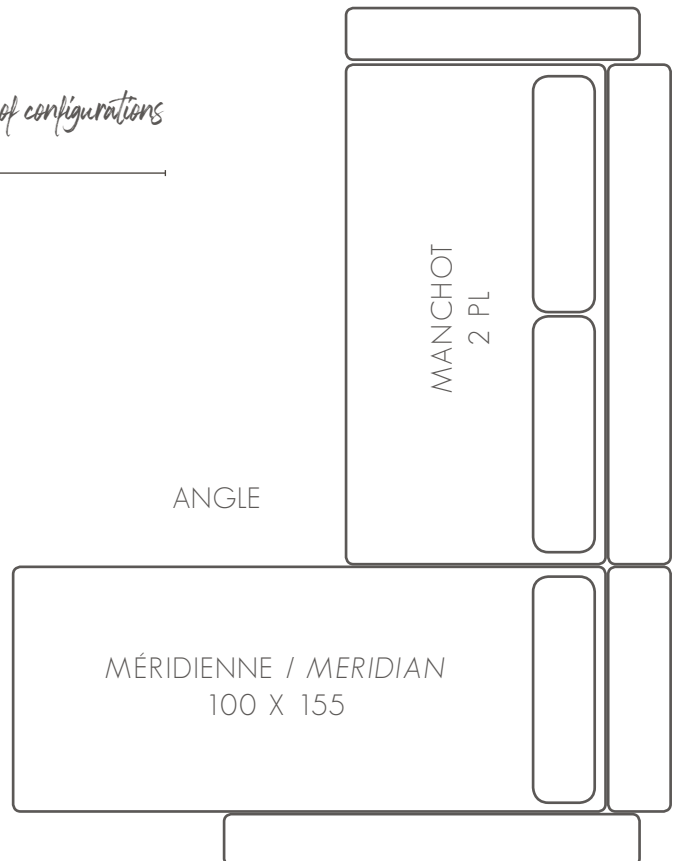
Coussins déco / Decorative pillows (option)

40 x 40 x tissu : (fabric)	couture plate (flat seam)	couture écrasée (crushed seam)	couture passe-poil / tissu : (piping seam / fabric)
50 x 50 x tissu : (fabric)	couture plate (flat seam)	couture écrasée (crushed seam)	couture passe-poil / tissu : (piping seam / fabric)
60 x 60 x tissu : (fabric)	couture plate (flat seam)	couture écrasée (crushed seam)	couture passe-poil / tissu : (piping seam / fabric)
30 x 50 x tissu : (fabric)	couture plate (flat seam)	couture écrasée (crushed seam)	couture passe-poil / tissu : (piping seam / fabric)

Exemples de configurations / Examples of configurations



CANAPÉ 2 PL / SOFA 2 PL



Edmond



3

S O F A R E V
LE CONFORT AUTREMENT

Dessinez votre Edmond / Draw your Edmond

Imprimez cette feuille et dessinez-nous simplement la configuration voulue :

Print this sheet and simply draw us the desired configuration:

* il n'est pas obligatoire de dessiner les coussins

* it is not mandatory to draw the cushions

