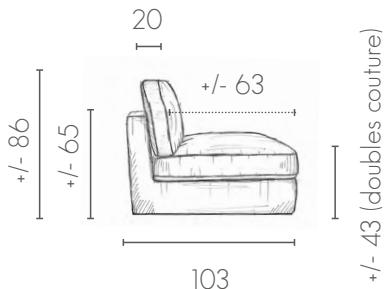




SOFAREV
LE CONFORT AUTREMENT

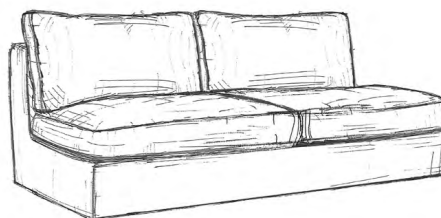
PROFONDEUR

TAILLE L SIZE L



STRUCTURE

SIMPLE
L 80 CM x



DOUBLE (FIXE)

L 160 CM x
L 200 CM x

Accoudoirs obligatoires et de dimensions identiques - Mandatory armrests of identical dimensions

LONGUE

L 80 X 160 CM x
L 100 X 160 CM x



TISSU STRUCTURE
+ ACCOUDOIRS
FABRIC STRUCTURE + ARMRESTS

COUTURES
STRUCTURE



PLATE / FLAT SEAM

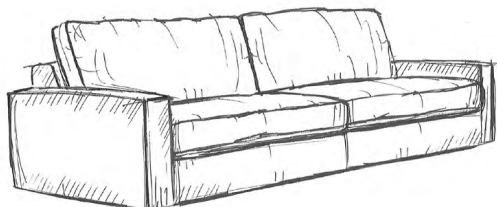
ACCOUDOIRS BAS*

* Commande avec un accoudoir sur le même module et / ou de largeur différente (impossible) * Order with an armrest on the same module and / or of different width (not possible)

49 (sans pieds)



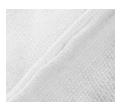
6 CM DOUBLE COUTURE



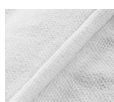
12 CM DOUBLE COUTURE



PLATE
FLAT SEAM

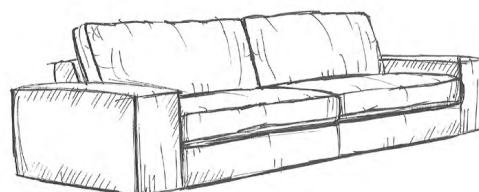


ECRASÉE
CRUSHED SEAM



PASSEPOIL
PIPING SEAM

TISSU COUTURE
FABRIC SEAM



30 CM DOUBLE COUTURE

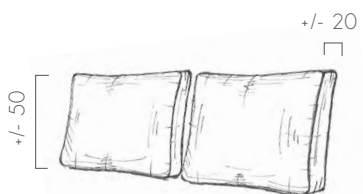


S O F A R E V

LE CONFORT AUTREMENT

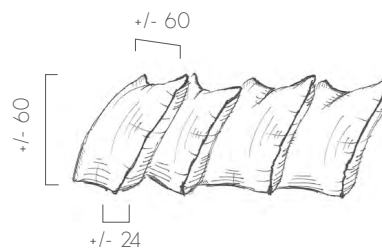
DOSSIER

FINITION DOUBLE COUTURE



PLACÉS / CUSHIONS PLACED

FINITION SIMPLE COUTURE



MULTI (OPTION) - SIMPLE COUTURE
MULTI CUSHIONS - SINGLE STITCHING

TISSU (PLACÉS)
FABRIC (PLACED)

.....

TISSU MULTI / FACE A :

FABRIC (MULTI) FACE A

/ FACE B :

FABRIC (MULTI) FACE B

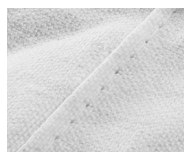
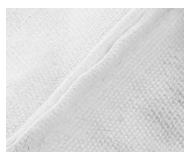
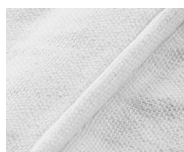


PLATE
FLAT SEAM



ECRASÉE
CRUSHED SEAM



PASSEPOIL
PIPING SEAM

TISSU COUTURE

FABRIC SEAM

ASSISE

MULTI



CONFORT MOELLEUX (STANDARD) - 35 KG/HR
SOFT COMFORT (STANDARD) - 35 KG/HR

TISSU (MULTI ASSISE)

FABRIC (MULTI SEATS)

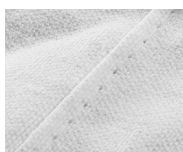
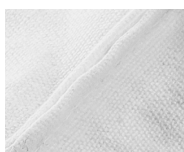
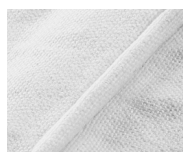


PLATE
FLAT SEAM



ECRASÉE
CRUSHED SEAM



PASSEPOIL
PIPING SEAM

TISSU COUTURE

FABRIC SEAM



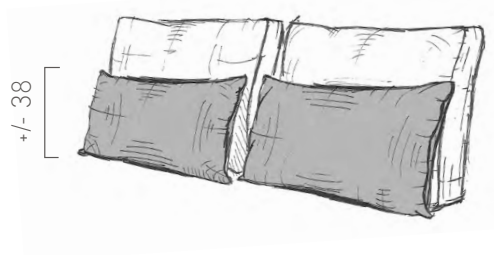
SOFAREV

LE CONFORT AUTREMENT

PLACÉS CUSHIONS PLACED

DOUBLE COUSSINAGE (PLACÉS)
SIMPLE COUTURE

DOUBLE CUSHIONING THICKNESS
(PLACED) SIMPLE STITCHING



Epaisseur : +/- 16
Thickness

DOUBLE COUSSINAGE (OPTION)

Chauffeuse simple 80 cm = 1 x coussin : L 75 x H 43 x P 16	x
Chauffeuse double 160 cm = 2 x coussins : L 75 x H 43 x P 16	x
Chauffeuse double 200 cm = 2 x coussins : L 95 x H 43 x P 16	x
Chauffeuse Longue 80 x 160 cm = 1 x coussin : L 75 x H 43 x P 16	x
Chauffeuse Longue 100 x 160 cm = 1 x coussin : L 95 x H 43 x P 16	x

TISSU
FABRIC

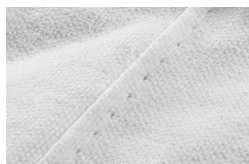
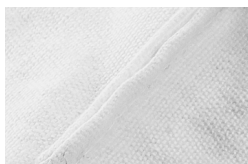
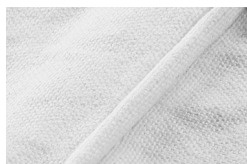


PLATE
FLAT SEAM



ECRASÉE
CRUSHED SEAM



PASSEPOIL
PIPING SEAM

TISSU COUTURE
FABRIC SEAM

Coussins déco / Decorative pillows (option)

40 x 40 x tissu :	couture plate (flat seam)	couture écrasée (crushed seam)	couture passe-poil / tissu :
(fabric)			(piping seam / fabric)
50 x 50 x tissu :	couture plate (flat seam)	couture écrasée (crushed seam)	couture passe-poil / tissu :
(fabric)			(piping seam / fabric)
60 x 60 x tissu :	couture plate (flat seam)	couture écrasée (crushed seam)	couture passe-poil / tissu :
(fabric)			(piping seam / fabric)
30 x 50 x tissu :	couture plate (flat seam)	couture écrasée (crushed seam)	couture passe-poil / tissu :
(fabric)			(piping seam / fabric)

Dimensions en cm (Tolérance de fabrication +/- 3.5%) - Visuels non contractuels - Conception sur-mesure sous conditions de faisabilité technique après accord du bureau d'études et acceptation du devis.* Le panneau de dos sera toujours avec une couture centrale. Structure livrée démontée. La grandeur de la mono-assise oblige techniquement à prendre en considération un « effet de pochage », celui-ci sera plus ou moins prononcé, suivant le revêtement choisi. Le ressenti « moelleux » ou « medium » est propre à chaque personne et peut varier suivant le revêtement et la dimension. Se référer au catalogue / Dimensions in cm (Manufacturing tolerance +/- 3.5%) - Non-contractual visuals - Customized design under technical feasibility conditions after agreement from the design office and acceptance of the quote.* The back panel will always be with a center seam. Structure delivered disassembled. The size of the single-sided construction technically requires a « pocketing effect » to be taken into account, which will be more or less pronounced, depending on the coating chosen. The feeling « soft » or « medium » is specific to each person and can vary according to the coating and the size. Please refer to the catalog

le lounge

OUTDOOR

FICHE COMMANDE

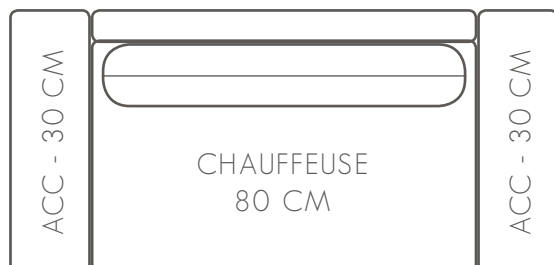
PURCHASE ORDER



4

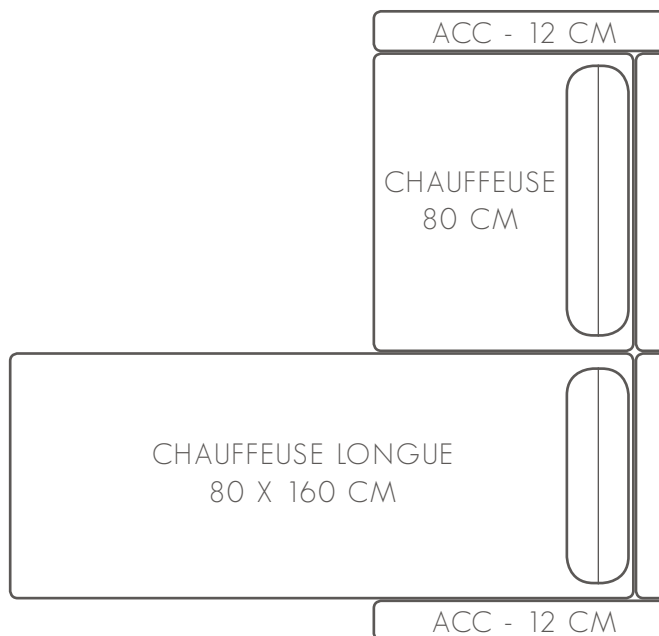
SOFAREV

LE CONFORT AUTREMENT



CANAPÉ / SOFA

ANGLE



→ Dessinez votre lounge OUTDOOR / Draw your own lounge OUTDOOR

Imprimez cette feuille et dessinez-nous simplement la configuration voulue :

Print this sheet and simply draw us the desired configuration :

* il n'est pas obligatoire de dessiner les coussins

* it is not mandatory to draw the cushions

